

Comédie de Genève

# Technical Rider

## REHEARSAL ROOM/STUDIOS

**Technical Director**  
**Yves Fröhle**  
T. +41 22 809 60 81  
yfrohle@comédie.ch

**COMÉDIE DE GENÈVE**  
www.comédie.ch

## TECHNICAL TEAM



### TECHNICAL DIRECTION

Technical director  
FRÖHLE Yves  
+4122 809 60 81 yfrohle@comédie.ch

Deputy technical directors  
PROUT Terence  
+4122 809 60 82 tprout@comédie.ch

BALLERIO William  
+4122 809 60 87 wballerio@comédie.ch

Assistants to the technical direct.  
BLANC Margaux  
+4122 809 60 88 mblanc@comédie.ch

LABBE Margaret  
+4122 708 49 46 mlabbe@comédie.ch

### STAGE

BRUNISHOLZ Philippe  
+4122 839 60 87 pbrunisholz@comédie.ch

GASTALDELLO Mateo  
+4122 708 49 31 mgastaldello@comédie.ch

OBERSON Valérie  
+4122 839 60 89 voberson@comédie.ch

RAMOS LOPES Frederico  
+4122 708 49 30 framoslopes@comédie.ch

SARRAILH Sylvain  
+4122 708 49 87 ssarrailh@comédie.ch

### RIGGING

MARTIN Benoit  
+4122 708 49 27 bmartin@comédie.ch

MÉGROZ Ivan  
+4122 809 60 84 imegroz@comédie.ch

MILLO Youri  
+4122 708 49 28 ymillo@comédie.ch

### LIGHTING

BRYAND Alexandre  
+4122 708 49 32 abryand@comédie.ch

DEPIERRE Bastien  
+4122 809 60 71 bdepierre@comédie.ch

LÉVI Serge  
+4122 708 49 34 slevi@comédie.ch

PERRE Nelly  
+4122 708 49 33 nperre@comédie.ch

REBOU Thomas  
+4122 708 49 35 trebou@comédie.ch

VIALA Arnaud  
+4122 708 49 91 aviala@comédie.ch

### SOUND

MUGEL Charles  
+4122 708 49 36 cmugel@comédie.ch

SAILLET Benoit  
+4122 708 49 37 bsaillet@comédie.ch

VAZEILLE Alizée  
+4122 708 49 86 avazeille@comédie.ch

VICQ Benjamin  
+4122 708 49 38 bvicq@comédie.ch

### NETWORK

HATT Robert  
+4122 708 49 90 rhatt@comédie.ch

### VIDEO

BOREL Gilles  
+4122 708 49 48 gborel@comédie.ch

DLIOUI Houssein  
+4122 708 49 47 hdlioui@comédie.ch

### COSTUMES

MOBERG Ingrid  
+4122 809 60 77 imoberg@comédie.ch

DUBOIS Karine  
+4122 708 49 40 kdubois@comédie.ch

### DECOR

Head of scenery production  
PERRIER Gilles  
+4122 708 49 42 gperrier@comédie.ch

Locksmith  
BERTRAND Hugo  
+4122 708 49 44 hbertrand@comédie.ch

Scenery maker  
CRUCHON Alain  
+4122 708 49 45 acruchon@comédie.ch

BOISSEAU Balthazar  
+4122 808 07 89 bboisseau@comédie.ch



# ACCES



<b>Staff and artists' door :</b>	Promenade Louise Boulaz 4 - 1207 Geneva
<b>Loading bay :</b>	Promenade Louise Boulaz 2 - 1207 Geneva (via rue de Chamonix 3)
<b>Public entrance :</b>	Esplanade Alice Bailly 1 – 1207 Geneva
<b>Lorry parking :</b>	It is not possible to park at the theatre
<b>Parking options :</b>	Geneva Airport paid parking P43 - 1215 Le Grand-Saconnex Rue Jacques Gosselin – 1227 Carouge Route des Jeunes (opposite la Praille Stadium) Geneva / Carouge

---

## LORRY ACCESS

To enter the loading bay, call either General Services on +4122 708 49 11 or your contact at Comédie de Genève so that the bollards can be lowered.

Please let us know the date and time of the lorry's arrival beforehand.

The bay can only be accessed by reversing in.



©Charles Muegel

## STUDIO DOORSS

Both rehearsal rooms are on upper floors and can be accessed via the stairs or lift for people and via the goods lift for cumbersome equipment.



©Charles Muegel

## ABOUT OUR STUDIOS



### REHEARSAL ROOMS

These rooms are rehearsal rooms and are therefore not designed to house large scenery and large-scale technical set-ups.

Tables and chairs can be provided depending on your needs. Please make requests in advance.

### STUDIO 1

Depth: 17.20m (under the bridge) - 15.33m

Width from wall to wall: 12.93m

Floor surface area : 222m<sup>2</sup>

Height: 5.73m to grid

Bridge: 2.47m under the bridge - 3.31m

### STUDIO 2

Depth : 15.37m

Width wall to wall : 10.30m

Floor surface area : 158m<sup>2</sup>

Height : 6.02m to grid

Bridge : 3.31m



© Régis Colay



© Régis Colay

It is possible to create a blackout in both rooms

### TECHNICAL EQUIPMENT

A mobile booth as well as the following technical equipment is available in each room :

#### SOUND

Yamaha MGP16X console 4 x Kling & Freitage CA 106

LabGruppen IPD2400 (2 CH) amplification)

#### STAGE

Possibility of installing dance mat.

Studio 1 : 8 dance mat x 12.5m x 2m

Studio 2 : 7 dance mat x 10m x 2m

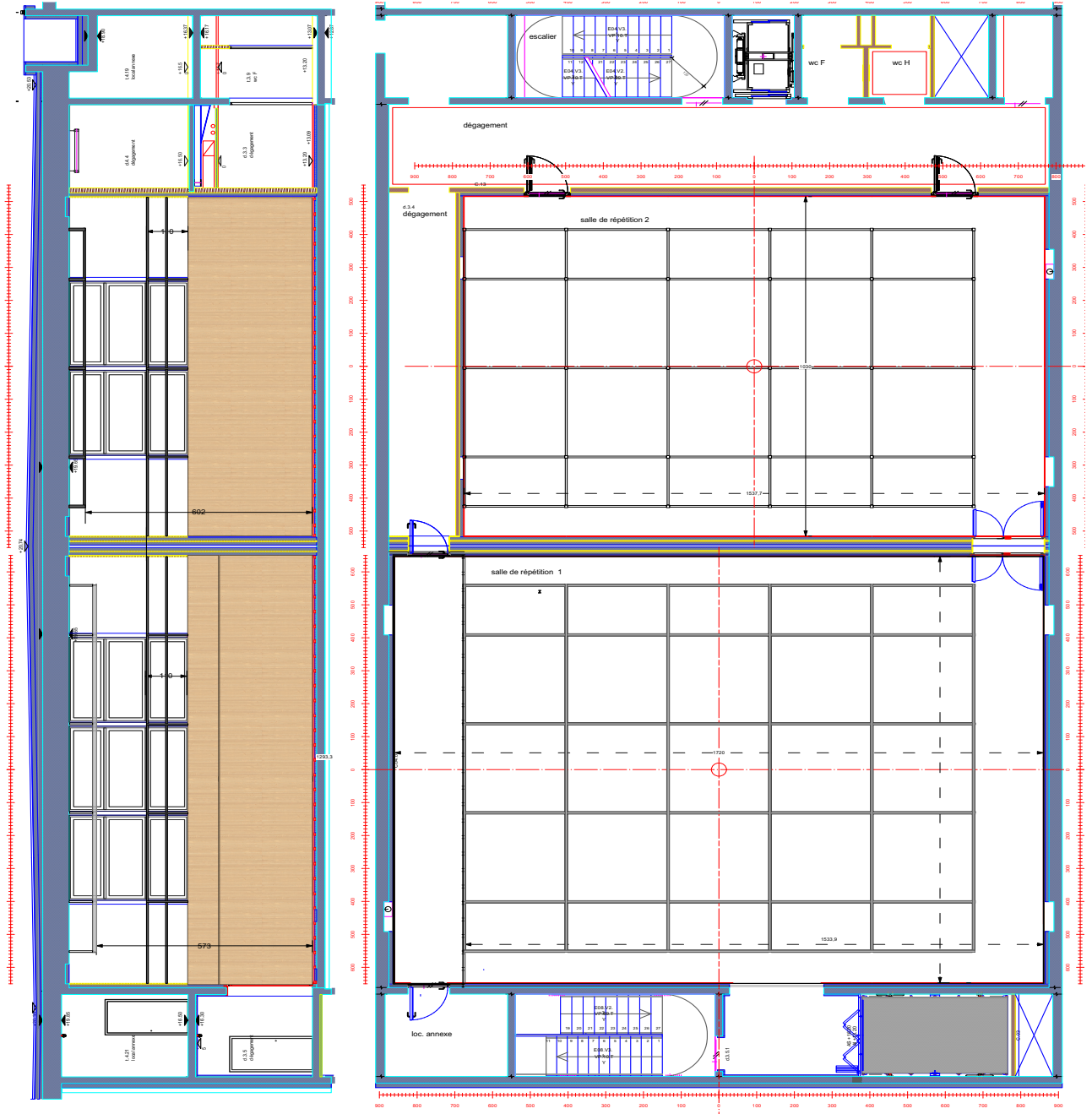
#### LIGHTING

In order to save energy, we offer a suite of equipment made up entirely of LED lights

ETC COLORSOURCE AV 20 Console

MARTIN RUSH PAR 2 ZOOM RGBW 10°-60°

ELATION ARENA ZOOM Q71IP RGBW 7°-40°



Comédie de Genève			
Production:		M.E.S.	
Lieu: <b>SALLE DE REPETITION 1&amp;2</b>		Vue: <b>SALLES DE REPETITION1&amp;2</b>	
Lumière:	Scénographie:	Date:	
Echelle: <b>1:100</b>	Dessiné par: <b>A.B</b>	Resp.de projet:	Version: <b>1</b>
Contacte: Promenade Louise Boulaz, 1207 Genève. +41227084911 technique@comedie.ch			



## OTHER INFORMATION



### TECHINCAL SERVICES OPENING TIMES

Morning : 09h – 13h

Lunch break : 13h – 14h

Afternoon : 14h – 18h

Evening break : 18h – 19h

Evening : 19h – 23h

These hours can be altered as long as a request is made and has been approved by the Technical Director.

Our staff is subject to Swiss labour law.

(artos\_plaquette\_tt\_theatres\_181128\_web.pdf (artos-net.ch))

### EQUIPMENT FOR STAFF

All staff taking part in setting up and breaking down must wear safety shoes and gloves.

### ARTISTS

Access to dressing rooms on upper floors is via... They can be accessed by stairs and by lift.

There is an adjoining waiting room with toilets and a shower specifically for the room.

### DRESSING ROOMS AND EQUIPMENT

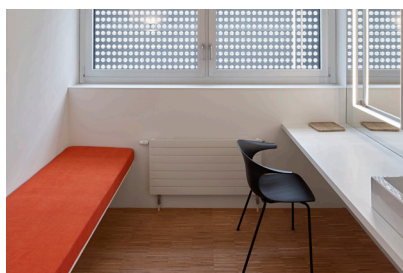
Individual dressing rooms floor 4- 8 individual furnished dressing rooms (day bed, mirror, hanging space, shower, sink) 1 dressing room with disabled access.

Shared dressing rooms floor 3 - 4 8-person furnished dressing rooms (armchairs, mirrors, clothes rails, shower, toilet).

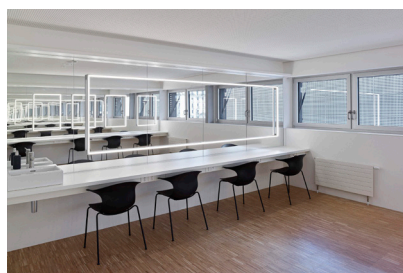
Make-up room floor 4- 2 rooms each for 5 people

### CATERING AREA

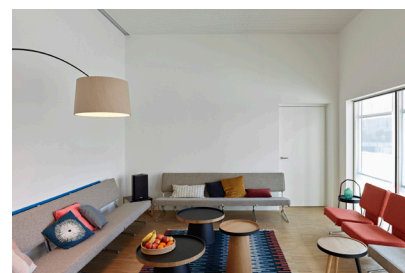
Furnished kitchen (microwave, dishwasher, coffee machine, teapot) 10-person table. Outside balcony space for smokers.



© Régis Golay



© Régis Golay



© Régis Golay